



PINECREST
FLORIDA

Cities of Happiness Initiative



Dear Village of Pinecrest Administrators and Citizens,

It is with great enthusiasm that we present this research report as part of the *Cities of Happiness Initiative (CHI)*. As the Village of Pinecrest continues to flourish as a vibrant and dynamic community, our goal is to provide insights that will support the ongoing pursuit of collective happiness and well-being for all residents.

This comprehensive report reflects the diligent efforts of our team, grounded in extensive research, community feedback, and firsthand observations within your community. It explores key elements that shape residents' well-being, satisfaction, and happiness, offering a holistic view of the Village of Pinecrest's cultural richness, environmental sustainability, and challenges that influence daily life. Additionally, we report solutions proposed by the residents to further enhance the quality of life and foster an even stronger sense of happiness in the Village of Pinecrest.

The report is divided into three parts for a clear and structured analysis:

- **Part 1: Summary of Research Findings (p3 - 8)**
This section outlines key insights from our research, highlighting the factors that impact happiness and well-being in Pinecrest.
- **Part 2: PlayVerto Survey (Quantitative) (p9 - 13)**
This section presents quantitative data gathered through the PlayVerto survey, providing measurable insights into the levels of happiness and satisfaction within the community. These data-driven results are instrumental in shaping future initiatives and policies.
- **Part 3: Focus Groups and Community Insights (Qualitative) (p14 - 39)**
This section captures the voices of the community through focus groups, direct observations, and engagement efforts, offering rich, qualitative insights into the lived experiences of the Village of Pinecrest residents.

Together, these findings provide a roadmap for fostering long-term happiness, guiding the Pinecrest as it continues to evolve into a vibrant, thriving, and connected community.

With Love & Gratitude,

Cities of Happiness Initiative Research Team



Research Team Members:

Ellen Campos Sousa, PhD
Luis Miguel Gallardo
Angélica Pigola, PhD (data analyses)
Elena Pietro (data analyses)
City of Happiness Team
Play Verto Research Team

PART 1

Summary of Research Findings

Summary of Research Findings - 1

Pinecrest is seen by its residents as a harmonious blend of suburban tranquility and modern convenience, defined by a strong sense of community and safety. The village is treasured for its top-rated schools, peaceful parks, and family-friendly atmosphere, offering a retreat from the energy of nearby Miami. While Pinecrest's cultural identity continues to evolve with growing diversity, it remains grounded in traditions that encourage neighborly connections and active community involvement. Events like farmers markets and artistic festivals reinforce this communal spirit, fostering a deep sense of belonging among residents. Despite demographic changes and rising property values, Pinecrest is still regarded as an inclusive, secure, and desirable place to live, where the balance between a peaceful lifestyle and access to urban amenities is thoughtfully preserved.

Happiness in Pinecrest is shaped by strong community ties, a serene natural environment, safety, and access to essential amenities. Residents appreciate the close-knit nature of the community, active participation in local events, and the tranquil green spaces that contribute to a sense of calm. Safety remains a cornerstone of well-being, with effective law enforcement and a welcoming, inclusive atmosphere enhancing the sense of belonging. Quality of life is further enriched by accessible parks, recreational opportunities, and a thriving arts and cultural scene. While some residents seek more diverse activities, improved transportation, and additional amenities, there is an overall sense of contentment and opportunity for further growth in community happiness.

The community of Pinecrest is navigating a range of challenges that reflect its evolving dynamics and modern complexities. Key areas of focus include addressing traffic congestion, managing infrastructure demands, and balancing development while preserving the village's charm and green spaces. Residents are advocating for responsible growth to avoid overdevelopment and ensure affordability, especially for retirees. Enhancing safety and security remains a priority, with calls for improved crime prevention measures and stronger communication with local authorities. Additionally, environmental concerns, such as wildlife disturbances and sanitation, highlight the need for thoughtful planning to maintain Pinecrest's high quality of life.

In Pinecrest, diverse perspectives on governance and transparency present opportunities for improvement, with a focus on enhancing access to public information and ensuring consistent enforcement of local codes. Strengthening communication and community engagement is essential, as some residents feel disconnected from local decision-making. Increasing participation in council meetings and aligning programs more closely with community preferences can help foster a more inclusive approach. Additionally, as Pinecrest's population ages, there is a growing need for enhanced support for active aging and independence. Strategic planning around financial sustainability and budget allocation will be crucial to maintaining essential community services and driving infrastructure improvements for the future.

Summary of Research Findings - 2

Pinecrest residents have offered a wide array of suggestions to improve community life, focusing on safety, infrastructure, social engagement, and environmental sustainability. They emphasize the need for stronger communication about safety issues, improved emergency response systems, and a more visible police presence. Social engagement ideas include increasing diverse programming, promoting civic participation, and creating spaces that foster community connections. Residents also highlight the importance of inclusive communication channels and better accessibility to local governance to ensure that every voice is heard and involved in decision-making processes.

In terms of infrastructure, residents suggest improvements in public transit, utility infrastructure, and mobility solutions, advocating for expanded bike paths and safer pedestrian zones. There is also a strong desire for enhanced recreational amenities like sports courts, dog parks, and non-commercial community spaces. Environmental concerns include calls for better maintenance of green spaces, the management of invasive species, and the implementation of sustainability initiatives like energy-efficient infrastructure and recycling programs. These initiatives aim to foster a more eco-conscious and resilient community.

The collective vision presented by residents underscores a deep commitment to Pinecrest's future, focusing on a balance between development and preservation of the community's unique character. Their recommendations highlight the importance of transparent governance, proactive community-building, and sustainable growth. Through collaboration and innovation, these suggestions offer a roadmap for maintaining Pinecrest as a safe, inclusive, and vibrant community that prioritizes the well-being of all.

Next, we summarize the key points in alignment with the Wheel of Happiness.



Summary of Research Findings - 3

Financial

Most respondents are satisfied with their financial situation but feel the Village could do more to improve financial well-being. While some are uncertain about whether owning more possessions would boost their happiness, many believe their current material possessions contribute positively to their overall satisfaction. Many also call for senior support, such as reducing housing taxes. Notably, 67% agree that Pinecrest's services are worth the taxes they pay.

Spiritual

Most residents identify as spiritual and recognize that religious or gratitude practices significantly contribute to their happiness. However, 26.1% reported that they do not participate in any such practices. Many residents also noted that they have easy access to religious denominations of their choice. The expression of gratitude is frequently highlighted as a crucial aspect of their well-being, with many feeling thankful for the opportunity to live in Pinecrest.

Ecological

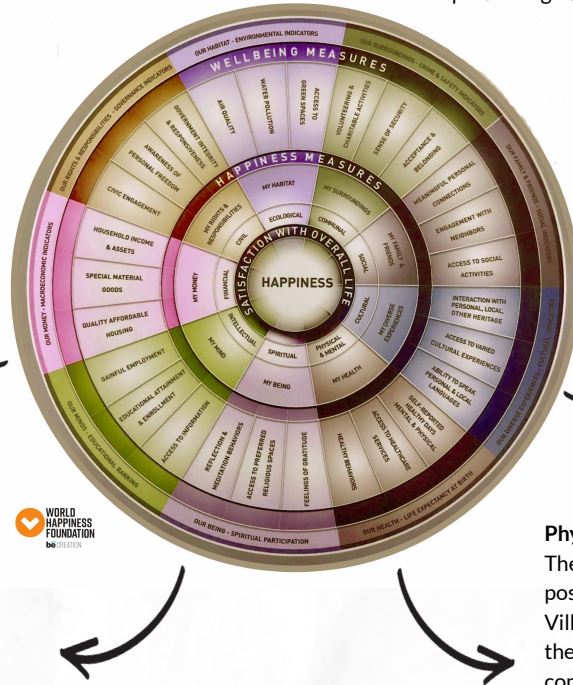
A significant majority of residents believe that environmental factors and natural surroundings play a crucial role in their happiness. Parks, Pinecrest Gardens, and the area's natural landscapes are frequently highlighted as key elements that contribute to the unique charm of Pinecrest. Overall, residents express satisfaction with the Village's efforts to maintain and enhance the environment, particularly in preserving native vegetation and fostering green spaces.

Cultural

A majority of residents feel confident in their ability to communicate in their native language, emphasizing the value of linguistic diversity within the community. Most also believe that access to cultural experiences plays a crucial role in their happiness, highlighting the importance of cultural engagement in promoting well-being. Many residents are satisfied with the Village's efforts to promote cultural events, and they view interactions with people from different cultures as a strength that enhances Pinecrest's sense of community. Events like concerts and farmers' markets were particularly praised for fostering cultural exchange and community connection.

Physical and Mental

The majority of residents view their physical and mental health positively. However, it is notable that only 52% are satisfied with the Village's efforts to promote community health. Residents emphasize the importance of having access to exercise opportunities in the community, yet many feel that more activities are needed, particularly for seniors. There is a strong call for an increase in mental and physical health activities within Pinecrest.



Summary of Research Findings - 4

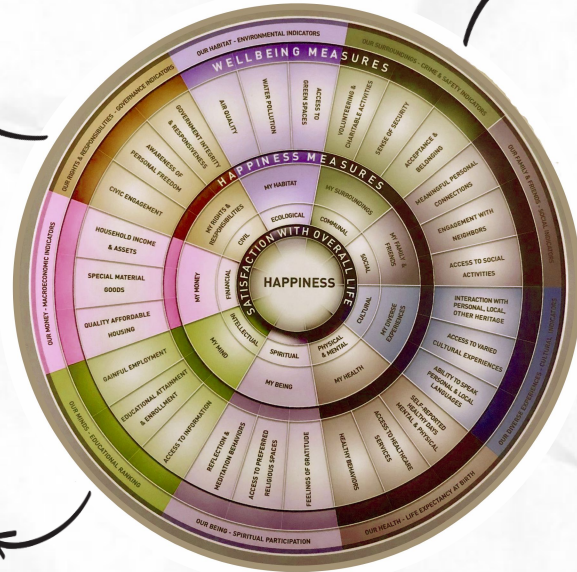
Civil

Seventy percent of residents believe Village officials and staff operate with integrity and honesty. While most acknowledge that government actions influence their happiness, civic engagement plays a lesser role for many, as the majority do not participate in activities like public meetings or community groups. However, there is a call for a larger, more welcoming space for council meetings.

Overall, residents are satisfied with Village governance, feeling heard, valued, and aware of their rights and freedoms. Despite this, they seek greater transparency and stronger code compliance. While residents appreciate the Village's communication efforts, many feel that important information is often missed, highlighting the need for improved outreach

Intellectual

The quality of schools was frequently mentioned as a defining feature of Pinecrest's identity and a key contributor to residents' sense of happiness. Only 9% of respondents indicated that education is not important to their happiness, highlighting the significant role education plays in the lives of Pinecrest residents. Despite the generally positive view of education in the community, only 58% of respondents expressed satisfaction with both the quality and affordability of local schools. The quality of education, however, is closely tied to the well-being of teachers, who play a crucial role in shaping students' experiences. Ensuring the mental and physical well-being of educators should be a priority, as it directly impacts the quality of education and, consequently, the happiness and success of students. By focusing on the needs of teachers, the community can help sustain high educational standards and foster a healthier, more supportive learning environment.



Communal

Community plays a vital role in shaping Pinecrest's identity and the overall happiness of its citizens. While most residents feel connected, safe, and valued, a notable portion expressed uncertainty about their sense of community. Though they recognize the Village's efforts to foster stronger community ties, many are calling for more tangible actions. Nearly half of respondents reported never having volunteered, yet there is significant interest in doing so, with many offering suggestions to help reconnect and strengthen the community. Safety remains a key factor in residents' well-being, but nearly one-third were unsure about their sense of security in Pinecrest. Many have requested a more visible police presence and more timely, transparent communication about local crime.

Social

Social activities and neighborly engagement are seen as key drivers of happiness in Pinecrest. While the community is often described as connected, recent changes—particularly an influx of newcomers—have diminished this perception for some. A common theme among residents is the need for initiatives to help reconnect the community, with many offering suggestions for how this can be achieved. Although residents appreciate the social events Pinecrest provides, they emphasize that there is room for more activities catering to different age groups and interests

Summary of Research Findings - 5

Intellectual (cont.)

Beyond education, schools influence families and the broader community, making them critical for shaping the future. In discussions with school administrators, the focus was on the challenges of time constraints and inadequate mental health resources for both students and staff. Administrators highlighted the heavy workloads that limit teachers' participation in wellness programs and the overburdened mental health staff who cannot meet the rising demand for student support. These issues are compounded by inconsistent availability of mental health coordinators and an overload of school programs that lack adequate staffing.

To address these challenges, administrators proposed several solutions aimed at reducing stress and promoting well-being among teachers and students. They suggested providing more flexible schedules for teachers, incorporating wellness activities into the school day, and offering access to faculty gyms or community fitness centers. Additionally, they recommended the use of mindfulness apps and introducing therapy animals to schools to alleviate stress. Most importantly, they called for hiring more mental health personnel to ensure students receive the consistent support they need.

In summary, school administrators emphasize the need for more time and resources for teacher self-care, mental health support, and wellness activities. Their suggestions include increasing access to fitness facilities, mental health apps, and therapy animals, while addressing the shortage of mental health personnel. These solutions aim to create a healthier, more supportive environment for both staff and students, ultimately enhancing the overall well-being of the school community.

Students emphasized the importance of social connections, personal achievements, and inner peace as key contributors to their happiness, while also highlighting the pressures stemming from demanding academic schedules.

They suggested revising educational policies to reduce stress, such as lowering homework loads, improving exam scheduling, and incorporating more breaks to foster relaxation and social interaction. Students also expressed appreciation for Pinecrest's family-friendly environment but called for more local activities and spaces to enhance social engagement. Additionally, they pointed out a lack of wellness strategies in schools, advocating for mental health practices to be integrated into the daily curriculum.

They stressed the value of community involvement and recommended that Pinecrest offer more local businesses and youth-centered spaces to encourage social connections. They were actively engaged in volunteer work and expressed a desire for more cultural events and gathering spots like parks and cafés. Regarding their educational experience, many students reported feeling significant pressure from rigorous academic demands, especially around AP exams, and suggested introducing well-being sessions, such as meditation or relaxation exercises, into the school day to help manage stress.

In summary, students proposed several reforms, including integrating mental health practices into school routines, enhancing community interaction through more social venues, and revising academic policies to alleviate stress. Their recommendations aimed to create a more supportive, balanced environment both in school and in the broader Pinecrest community, fostering overall well-being and social connectivity.

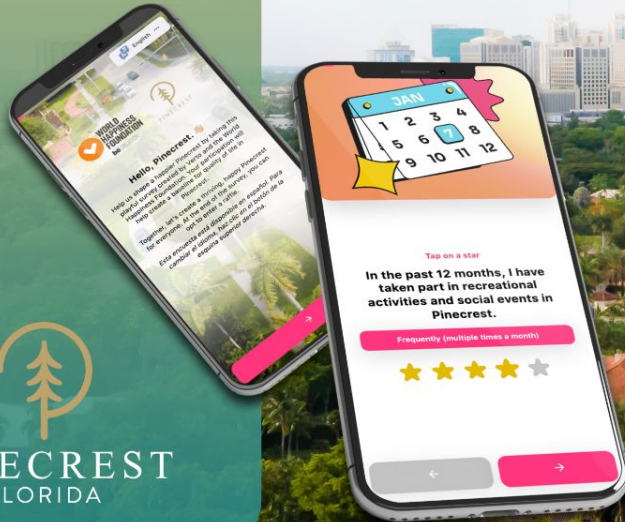
PART 2

Play Verto Survey (Quantitative)



Community Happiness Report

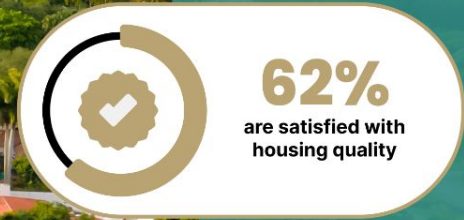
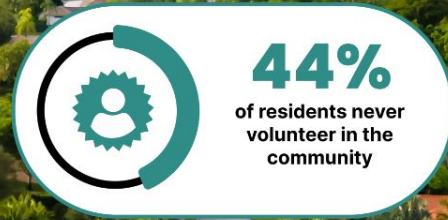
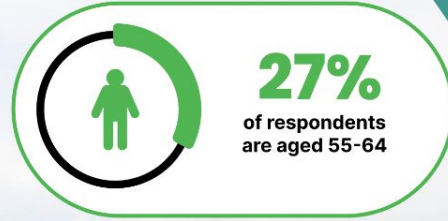
This report provides an analysis of the well-being of the Pinecrest community based on data gathered through surveys and the application of the Wheel of Happiness framework.



319

residents participated in the survey

59% Completion Rate



Linking data to the Wheel of Happiness

The Wheel of Happiness Framework

The Wheel of Happiness framework encompasses nine spheres: Ecological, Communal, Social, Cultural, Physical and Mental, Spiritual, Intellectual, Financial, and Civil.

Each sphere represents a crucial aspect of life influencing overall well-being. This framework guides our understanding of how various factors interconnect to shape happiness in Pinecrest.



Circular Wheel Diagram: Each sphere is represented visually in the wheel, highlighting their interconnected nature and impact on community well-being.

Deep Dive into the Wheel of Happiness Spheres

We are going to deep dive into some of the remaining spheres of the wheel.

Social

Social connections, particularly with neighbours, are essential, as **66% of residents** believe that interacting with their neighbors enhances their happiness. Strengthening these social bonds can help reduce loneliness and increase overall community satisfaction.



Ecological

A strong ecological foundation supports the well-being of residents, as evidenced by the fact that **92% agree** they have access to green spaces, 84% are satisfied with the air quality, and **68% express satisfaction** with water quality in their community, highlighting the direct influence of environmental quality on health and happiness.

Communal

Community participation and safety perceptions are vital for well-being, yet with **44% of residents** never volunteering and **29%** uncertain about their safety, increasing engagement and addressing safety concerns could greatly enhance communal happiness.

- *Social Participation:* **49.3% of residents** participate in social or recreational activities at least occasionally, but nearly half reported limited or no involvement in community activities like volunteering (44% have never volunteered).
- *Happiness Influencers:* Social activities and neighbour engagement are key happiness drivers, with **69.8%** and **70.4%** respectively believing they affect happiness "a lot." **76.2%** felt that acceptance and belonging had a major impact on their happiness.
- *Spiritual and Civic Engagement:* **87%** consider themselves spiritual, and 40.4% practice meditation, reflection, or prayer regularly. However, when it comes to city activities, participation remains mixed, with 30.7% participating sometimes, but **25.6%** participating rarely and **21.4%** not at all.



92%
agree they have access to green spaces

54%

are concerned about air quality



29%

of participants are uncertain about their safety

Civil

Trust in government plays a key role in overall satisfaction, with **63%** of residents expressing contentment with the clarity and timeliness of communications.

66%

feel that engagement with neighbors enhances their happiness

63%

of respondents are satisfied with government communication



Deep Dive into the Wheel of Happiness Spheres

We are going to deep dive into some of the remaining spheres of the wheel.

Trust and Integrity

Survey data reveals mixed perceptions about the integrity and responsiveness of city administration. Only **41.3% of residents** trust the public services provided by the city, and opinions are almost evenly split on whether city officials operate with integrity, with **37.4% in agreement** and **37% disagreeing**.

Perception of Administration (Civil Sphere)

Satisfaction with City Services: Only **62% are satisfied** with housing affordability, and **58%** with school quality, reflecting concerns over key public services.

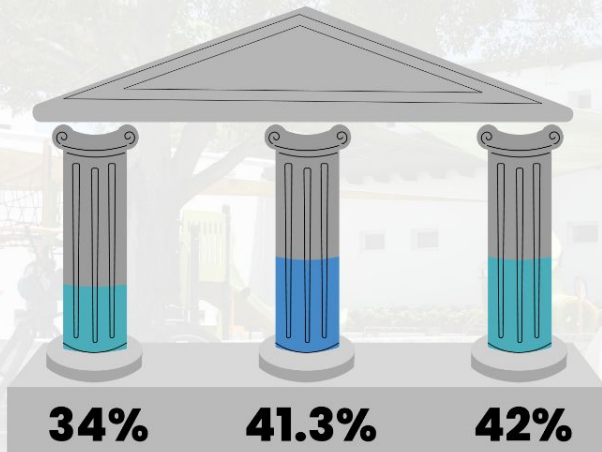
Civic Engagement and Government

Responsiveness: **61%** feel government actions have a lot of influence on their happiness, with uncertainty about civic support.



58%

of respondents are satisfied with school quality affordability

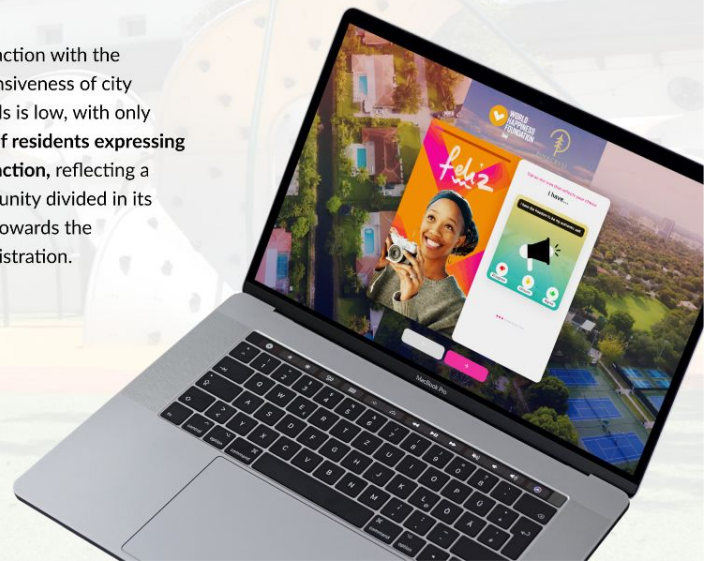


of residents feel government actions have a minor influence on their happiness

of residents trust the public services

of residents express satisfaction about the responsiveness of city officials

Satisfaction with the responsiveness of city officials is low, with only **42% of residents expressing satisfaction**, reflecting a community divided in its trust towards the administration.



PART 3

Focus Groups and Community Insights (Qualitative)

In this section of the report, we present the most significant insights derived from the qualitative data collected through focus groups and community discussions. These findings offer a deep understanding of the perceptions, experiences, and values of Pinecrest residents, shedding light on the community's identity, sense of happiness, challenges, and potential solutions.

This part of the report is divided into five main blocks:

- A. **Village of Pinecrest Identity**
- B. **Sense of Happiness**
- C. **Challenges**
- D. **Residents' Suggestions**
- E. **Schools**

Each block begins by highlighting the most frequently discussed topics, reflecting the collective viewpoints of the respondents. Following these highlights, we provide a comprehensive table summarizing the topics raised within each block.

Please note that the perspectives shared in this section are entirely based on the feedback and views expressed by the respondents during our qualitative data collection process.



A Village of Pincrest Identity



The Identity of the Village of Pinecrest a suburban enclave nestled within Miami-Dade County, embodies a unique blend of cultural identity, community engagement, and quality of life. This part of the report aims to delve deeply into various facets of the community dynamics, reported by residents, including its rich cultural tapestry, neighborhood relationships, community groups, safety concerns, local government engagement, demographic shifts, and overall resident satisfaction. Residents express genuine admiration for Pinecrest's positive aspects, including its excellent schools, safe neighborhood, and strong sense of community. They appreciate community initiatives such as the farmers market, artistic events, public parks, and activities catering to residents of all ages. Residents acknowledge the convenience and value of living in Pinecrest, its proximity to amenities and the overall comfortable living environment.

The main aspects about the Village of Pinecrest Identity according to residents' perception are detailed as follow:

1. Cultural Identity and Community Engagement

The Village of Pinecrest's cultural identity is multifaceted, characterized by a quaint village ambiance coupled with modern amenities. Residents often describe Pinecrest as a haven, known for its excellent schools, serene parks, strong sense of safety, and protection from Miami's bustling urban landscape. This identity has evolved over the years, reflecting the diverse population, and changing community dynamics.

Community environment is a cornerstone of Pinecrest's vibrancy. Residents express a strong sense of belonging and camaraderie, fostering good relationships with neighbors despite occasional differences in political views. Influential community groups, such as those advocating for preservation and promoting sportsmanship among children, positively contribute to Pinecrest's community dynamics.

2. Safety and Local Government Engagement

The Village of Pinecrest is renowned for its safety and responsive police department, and local government engagement plays a pivotal role in addressing community concerns. Residents appreciate the authorities' efforts to enhance safety and awareness, highlighting the responsive nature of the police department. They express overall satisfaction with the responsiveness and engagement of local government authorities, acknowledging officials' efforts to address community concerns, communicate effectively with residents, and involve them in decision-making processes. There are also mentions of potential excessive initiatives from local government, indicating a need for balance between responsiveness and regulatory impact.

3. Quality of Life and Community Initiatives

The quality of life in Pinecrest is a major attraction for residents. Excellent schools, a safe neighborhood, and a strong sense of community contribute significantly to residents' overall satisfaction. Community initiatives, including the popular farmers market, cultural events, public parks, and diverse activities for all ages, further enhance the quality of life in Pinecrest.

Engagement with local government is commendable, with residents acknowledging officials' responsiveness to inquiries and quick communication channels. Investments in green spaces, public parks, and community amenities underscore Pinecrest's commitment to enhancing residents' well-being and fostering a sense of belonging.

The residents emphasize the importance of community well-being, safety around schools, traffic management, and creating a safe environment for children to play in parks. They appreciate community events and services, especially for seniors, parents with young children, and kids, while also noting the need for better advertising and communication about these offerings. Residents reflect on the fortunate aspects of living in Pinecrest, comparing it to other areas and expressing gratitude for the community's overall well-being.

4. Changes Over Time and Demographic Shifts

Pinecrest has experienced notable changes over time, including population growth, demographic shifts, and alterations in the community landscape. Rising property values and demographic shifts have led to changes in neighborhood dynamics, impacting neighborly interactions and community visibility. New residents, often remodeling or rebuilding homes, have contributed to a more enclosed property layout.

Demographic shifts, particularly an increase in Hispanic and other cultural influences, enrich Pinecrest's cultural tapestry. Despite these changes, residents appreciate the inclusivity of the community and its tranquil environment compared to busier urban areas. Maintaining a sense of community amidst demographic shifts remains a focal point for residents and community leaders. Comparisons with other areas like Coral Gables emphasize Pinecrest's unique cultural identity, sense of peace, and tranquility amidst a changing urban landscape.

5. Sense of Security and Trust

Residents highlight the sense of security and trust within the community. They value the community's welcoming atmosphere and interactions while walking or biking, fostering a sense of connection and belonging. The residents express gratitude for the positive experiences and relationships within Pinecrest, contributing to a strong attachment to the community despite challenges. Overall, the residents' perceptions of Pinecrest reflect a nuanced understanding of the community's strengths, challenges, and ongoing changes. Their appreciation for the positive aspects, engagement with local government, and emphasis on community well-being underscore Pinecrest's appeal as a desirable and inclusive place to live within the Miami-Dade region.

6. Local Business and Entrepreneurship

Residents' perceptions of Pinecrest may also be influenced by the presence of local businesses, entrepreneurial ventures, and small-scale enterprises within the community. The support for local businesses, artisan shops, cafes, restaurants, and boutique stores contribute to a vibrant local economy, foster a sense of community pride, and create unique experiences for residents and visitors alike. Additionally, residents may value the entrepreneurial spirit, creativity, and innovation that local businesses bring to Pinecrest, enhancing its character and appeal as a dynamic and thriving community.

Additional aspects offer a more comprehensive understanding of residents' perceptions and experiences living in Pinecrest, reflecting the diverse and multifaceted nature of the community. Table 1 summarizes additional findings.



Table 1. Additional topics about Pinecrest Identity

Supportive Networks and Services: The availability of support networks, social services, assistance programs, senior programs, youth programs, and community organizations that cater to diverse needs and demographics can positively impact residents' well-being and sense of belonging in Pinecrest.

Communication and Information Sharing: Residents' access to information about community events, news, updates, and engagement opportunities through communication channels, local media, newsletters, social media platforms, and community websites can enhance their engagement and participation.

Community Events and Cultural Activities: Residents appreciate specific community events or cultural activities unique to Pinecrest, such as local festivals and art exhibitions. These events contribute to the community's cultural vibrancy and offer opportunities for residents to connect and celebrate together.

Cultural Institutions and Preservation: The presence of cultural institutions, the Pinecrest Garden, art galleries, historical landmarks, and efforts towards preservation and cultural enrichment contribute to residents' appreciation of Pinecrest's cultural and historical heritage.

Neighborhood Character and Aesthetics: The overall neighborhood character, aesthetics, landscaping, cleanliness, and maintenance of public spaces, streetscapes, and residential areas contribute to residents' sense of pride in their community and influence their overall perception of Pinecrest.

Environmental Sustainability: Pinecrest's efforts towards environmental sustainability, such as green initiatives, recycling programs, or conservation efforts are noted. They value the initiatives to preserving natural resources and promoting eco-friendly practices.

Educational Opportunities: Besides mentioning the quality of schools, residents might also appreciate educational opportunities beyond formal schooling, such as workshops, seminars, or community classes offered in Pinecrest. These opportunities contribute to lifelong learning and personal growth within the community.

Real Estate Market and Housing Options: Residents' experiences with the real estate market, property codes enforcement, and housing diversity within Pinecrest influence their perceptions of the community as a desirable place to live and invest in real estate.

Social and Recreational Opportunities: Residents' experiences with social and recreational opportunities within Pinecrest, such as community centers, sports facilities, libraries, and parks, can shape their perception of the community as a place that fosters social connections and active lifestyles.

Civic Engagement and Volunteering: Residents' involvement in civic engagement, volunteering, or community service initiatives are mentioned. They value opportunities to contribute positively to the community and make a difference through active participation in local projects or initiatives

Infrastructure and Public Services: The quality of infrastructure, public services, and amenities such as roads, utilities, recreational spaces, and public transportation could influence residents' satisfaction and perception of Pinecrest as a well-developed and livable community.

Healthcare Services: Access to quality healthcare services, medical facilities, hospitals, and healthcare professionals within nearby areas may be an important consideration for residents, especially those with healthcare needs or families with children.

Historical and Architectural Heritage: Residents' appreciation for Pinecrest's historical heritage, architectural character, preservation efforts, and community landmarks may also contribute to their overall sense of attachment and pride in the community.

Transportation and Accessibility: The ease of transportation and accessibility to major roads, public transportation options, and proximity to key locations such as downtown Miami, airports, and shopping centers can influence residents' convenience and overall satisfaction with Pinecrest.



Closing Remarks on Pinecrest Identity

Pinecrest emerges as a dynamic and multifaceted community, shaped by a myriad of factors that influence residents' perceptions and experiences. The residents' perception of Pinecrest is deeply intertwined with the community's cultural identity, neighborhood dynamics, safety concerns, local government engagement, demographic shifts, and overall quality of life.

Pinecrest's cultural identity is characterized by its quaint village ambiance, great schools, safety, and strong sense of community. Residents appreciate the diverse mix of people and cultural influences, highlighting inclusivity as a positive aspect. The community's engagement with local government is commendable, with residents expressing overall satisfaction with responsiveness and communication channels.

The quality of life in Pinecrest is a significant draw, with excellent schools, diverse community initiatives, and a vibrant cultural scene contributing to residents' overall satisfaction. Pinecrest residents feel a strong sense of attachment and pride in their community. The support for local businesses, emphasis on environmental sustainability, access to healthcare services, social and recreational opportunities, and preservation of cultural heritage further enrich residents' experiences and perceptions of Pinecrest.

Sustaining and enhancing Pinecrest's community dynamics also include:

- *Continued investment in safety measures and infrastructure improvements to address growing population concerns.*
- *Promoting inclusive community initiatives and events to foster neighborly interactions and strengthen community bonds.*
- *Collaborative efforts between residents, community groups, and local government to address emerging challenges and maintain Pinecrest's unique identity.*
- *Encouraging diverse participation in community decision-making processes to ensure inclusivity and representation of all residents' perspectives.*

In essence, Pinecrest represents a balance between suburban tranquility and urban vibrancy, offering residents a unique blend of amenities, community engagement, and quality of life that contribute to its enduring appeal as a desirable place to live and thrive within the Miami-Dade region

B

Sense of Happiness



The Sense of Happiness in Pinecrest is also a multidimensional concept shaped by community bonds, natural surroundings, safety, amenities, and personal experiences. The information here presented delves deeper into the various aspects of happiness as expressed by residents of Pinecrest, highlighting key themes and insights from their perspectives.

1. Community Bonds and Engagement

The sense of happiness in Pinecrest is strongly tied to community bonds and active engagement. Residents value the tight-knit nature of their neighborhoods, where knowing your neighbors and participating in community events are common. Activities such as the farmers' market, yoga classes, and cultural events at the community center foster a sense of togetherness and contribute positively to residents' overall happiness. However, some residents express a desire for more diverse community activities and increased social interaction, especially in areas where larger properties may limit traditional neighborhood gatherings.

2. Natural Environment and Peacefulness

The natural environment plays a significant role in shaping happiness in Pinecrest. Residents appreciate the abundance of green spaces, well-maintained parks, and the overall tranquility of the area. The presence of wildlife adds a unique charm to the community.

3. Safety and Belonging

Feeling safe and belonging to a welcoming community are fundamental aspects of happiness for Pinecrest residents. They commend the efforts of law enforcement and community watch programs in maintaining safety and reducing crime rates. The inclusive nature of the community, where diversity is embraced and discrimination is rare, fosters a sense of belongingness and acceptance among residents of different backgrounds. This inclusivity contributes significantly to the overall well-being and happiness of Pinecrest residents.

4. Quality of Life and Amenities

The quality of life in Pinecrest is characterized by convenience, accessibility to amenities, and well-planned infrastructure. Residents appreciate the proximity to essential services such as schools, shopping centers, healthcare facilities, and recreational areas. The abundance of parks, playgrounds, and community centers significantly enhances the livability of Pinecrest, offering residents ample opportunities for socialization and leisure activities. These recreational amenities promote a healthy lifestyle and contribute to overall happiness, including the community center, walking trails, bike paths, and various sports and activities available within the community. Together, they create a vibrant environment that fosters community engagement and well-being.

5. Environmental Sustainability and Green Living

Conservation projects are essential for fostering happiness in Pinecrest. Residents value the recycling programs, composting initiatives, well-maintained green spaces, tree preservation efforts, and the Pinecrest Garden.

6. Arts and Cultural Scene and Cultural Diversity

Pinecrest boasts a vibrant arts and cultural scene, featuring art galleries, music venues, theater performances, and cultural festivals that enhance residents' quality of life and provide opportunities for creative expression. Residents appreciate the variety of cultural events and celebrations that reflect the community's diverse backgrounds, fostering cross-cultural understanding, tolerance, and unity among individuals from different ethnicities, religions, and backgrounds. These cultural offerings not only contribute to a culturally rich community but also strengthen connections among residents, promoting inclusivity and a shared sense of belonging.

Closing Remarks on the Sense of Happiness

Happiness in Pinecrest is a product of vibrant community life, natural beauty, safety, inclusivity, and access to essential amenities. Fostering greater community interaction, and preserving the unique character of Pinecrest, the community can continue to thrive as a place where residents find joy, fulfillment, and a sense of home. The strong sense of community bonds, active engagement in local initiatives, and inclusivity across diverse backgrounds foster a supportive and welcoming environment where residents feel a sense of belonging and connection.

Pinecrest's lush greenery, well-maintained parks, and efforts toward environmental sustainability contribute to a serene and peaceful ambiance that enhances residents' quality of life and happiness. The emphasis on safety measures, responsive law enforcement, and community watch programs instills a sense of safety and security among residents, allowing them to enjoy their surroundings and activities without undue concerns.

Additionally, access to essential services, educational institutions, recreational amenities, and cultural offerings enrich residents' lives and provide opportunities for personal growth, leisure activities, and community engagement. Residents' active involvement in local governance, transparent decision-making processes, and collaborative efforts between community members and government entities contribute to effective governance, responsive services, and a sense of ownership and pride in shaping the community's future.

Pinecrest's vibrant arts scene, cultural diversity, and innovative initiatives foster creativity, cultural appreciation, and a forward-thinking mindset that adds vibrancy and dynamism to community life. Combining with the availability of wellness programs, and opportunities for physical activity and healthy living promote residents' well-being, vitality, and happiness.

However, when reporting what makes them happy, residents also highlighted the need for additional amenities, such as sports courts, dog parks, and improved public transportation, to further enhance their quality of life and happiness. Additionally, some residents expressed a desire for more diverse community activities and increased social interaction, particularly in areas where larger properties may limit traditional neighborhood gatherings. We will address these and other suggestions in Section "D - Residents' Suggestions."



The Challenges faced by the community of Pinecrest reflect both the dynamism and complexity of modern life. As a leading-edge, forward-thinking enclave known for its tranquil neighborhoods, excellent schools, and tight-knit community spirit, Pinecrest embodies the aspirations and concerns of its diverse residents. This report reveals the several challenges that confront Pinecrest today, ranging from communication hurdles and community engagement issues to infrastructure strains, governance complexities, and demographic shifts. Table 3 presents the main challenges among residents' opinions.

By examining these challenges comprehensively, we aim to uncover insights and actionable strategies that can empower Pinecrest to navigate these obstacles effectively while preserving its cherished qualities and enhancing the well-being of its residents. Strategic planning is required to address relevant challenges such as traffic congestion, infrastructure needs, and maintain Pinecrest's ease of navigation and quality of life. Balancing development with historic preservation, green spaces, and maintaining a family-friendly environment. The importance of responsible development to avoid overpopulation, maintain affordability, and preserve the Village of Pinecrest's atmosphere are some of the main challenges.

Overall, the main challenges facing Pinecrest encompass a range of critical areas. These include communication and community engagement difficulties, particularly in reaching residents effectively and fostering active participation. Infrastructure concerns, such as traffic congestion, speeding, and the need for environmental sustainability, pose significant challenges that require immediate attention. Governance and transparency issues, along with affordability challenges for older residents and demographic shifts, underscore the complexities of managing growth while preserving the Village of Pinecrest's unique identity. Enhancing cultural diversity, promoting inclusivity, and implementing strategic community-building initiatives are vital for fostering a cohesive and resilient community. These challenges collectively highlight the need for collaborative efforts, innovative solutions, and proactive engagement to address key issues and ensure a sustainable and vibrant future for Pinecrest.



Table 3. Main Challenges in the Village of Pinecrest

Communication and Community Engagement:

Difficulty in connecting with residents and engaging them due to the wide range of digital platforms and online negativity. There is low attendance at council meetings, with residents often participating only during contentious issues rather than to express satisfaction. A lack of awareness or perceived importance contributes to limited community participation. Additionally, there is a mismatch between community preferences and the programs offered by Pinecrest Parks and Recreation, Pinecrest Gardens, and the community center.

Infrastructure and Traffic Challenges:

Increased traffic and speeding on residential streets require greater attention from the police department. There is a need for speed bumps, improved bike-friendly infrastructure, and safe play areas for children. Additionally, inconsistent enforcement of building codes and concerns about tree removal and driveway extensions

Governance and Transparency Challenges:

There is a lack of transparency in accessing public information and difficulties in obtaining data from government entities. Inconsistencies in code compliance for building and yard regulations also exist. Additionally, navigating the Pinecrest website to access services can be challenging.

Activities offered: Desire for improved offers such as seating areas at the farmers markets, and more engaging activities for diverse age groups.

Environmental Concerns: The impact of developments on green spaces, aesthetics, and the overall charm of Pinecrest. Challenges include managing wildlife disturbances, such as noise from peacocks, issues with iguanas, and sanitation concerns. There is a need for responsible development to preserve Pinecrest's unique character and quality of life, as well as ongoing attention to ensure proper waste disposal.

Aging and Senior Support: Concerns have arisen that both the government and residents are not adequately supporting Pinecrest's elders in promoting active aging. There is a need for programs that support aging residents, facilitating their ability to age in place while maintaining quality of life and independence.

Infrastructure Improvements: Need for upgrades in infrastructure, including sewer systems, and traffic control measures. Desired for improved parks and community facilities.

Safety and Security Challenges: Concerns about crime, theft, and safety issues in residential areas. There are challenges in communication with local authorities and their responsiveness during emergencies. Efforts are needed to enhance neighborhood safety, implement crime prevention measures, and improve communication tools

Affordability and Demographic Changes: High property taxes create challenges for retirees on fixed incomes. Changes in neighborhood demographics arise from affordability issues. Concerns about overdevelopment, rising property prices, and investment-driven developments that impact the community's character.

Financial Sustainability and Budget Allocation: Concerns regarding budget allocation for community services, infrastructure maintenance, and public safety. Strategies for financial sustainability, efficient resource utilization, and addressing residents' affordability issues.

D Residents' Suggestions



Residents' Suggestions are presented in the following data, providing a comprehensive overview of their recommendations that reflect a collective vision for enhancing the quality of life, fostering community engagement, and addressing key challenges within the neighborhood. Through community outreach and dialogue, residents have voiced a multitude of ideas spanning various domains, from infrastructure improvements and safety measures to cultural enrichment, environmental sustainability, and economic development. We synthesized these diverse suggestions while avoiding repetitive solutions, offering a nuanced understanding of the residents' priorities and aspirations for the future of Pinecrest.

The suggestions presented are the result of active citizen participation, highlighting the community's commitment to collaborative problem-solving and collective action. Residents have expressed a strong desire for inclusive decision-making processes, transparent communication channels, and proactive initiatives that promote well-being, connectivity, and resilience. By capturing the breadth and depth of resident feedback, this report seeks to support the World Happiness Foundation recommendations to shape a vibrant, sustainable, and thriving future for Pinecrest.



1. Safety

Community Safety and Awareness: Residents express a strong desire for improved communication about safety issues, such as crime data and incidents. While they appreciate safety tools and apps, there is a call for more detailed information from village authorities. Positive interactions with law enforcement are frequently mentioned, with community-friendly programs and relations contributing to a sense of security and connection.

Enhanced Emergency Response Communication: Residents recommend improving communication during emergencies through an alert system that sends notifications via text, email, or phone calls. This would inform residents about public safety threats, road closures, and other incidents in real time.

Community Policing: There is a desire for more visible police presence and interaction in neighborhoods to foster a stronger sense of security. Positive experiences with law enforcement, particularly in schools, have contributed to a feeling of ease and reassurance among residents.

Public and Personal Safety Measures: Residents suggest implementing public safety awareness programs, including seminars on crime prevention, home security, and neighborhood watch initiatives. These programs aim to educate residents about safety protocols and encourage proactive measures. Alongside these efforts, residents emphasize the importance of personal vigilance, such as securing doors and vehicles to prevent thefts. They also highlight tools like the Nextdoor app, Citizen, and Safewatch for accessing crime updates and sharing concerns, fostering a more informed and safety-conscious community.

2. Social Engagement:

Promoting Community Engagement: Suggestions include simplifying event registration processes, addressing language barriers, and encouraging neighborly interactions through initiatives like sitting outside during community events. Additionally, residents advocate for more diverse programming and partnerships that support local artists and musicians, which would help enhance community engagement and celebrate Pinecrest's cultural richness.

Civic Engagement and Volunteerism: There is a strong push to promote civic engagement and volunteerism by encouraging residents to actively participate in local government, community service projects, and civic organizations. Initiatives to recognize and celebrate volunteers, provide training, and offer resources for civic engagement are also highlighted as ways to build a culture of giving back to the community.

Encouraging Neighborly Connections: They express a desire for more diverse community activities and increased social interaction, especially in areas where larger properties may limit traditional neighborhood gatherings. Residents propose organizing activities like exercise classes and walking groups to foster social connections. Other suggestions include offering unique classes, such as cooking and gardening, and creating interest clubs meeting, such as sailing and book club, to provide more opportunities for residents to bond and strengthen neighborly ties.

Community-oriented Spaces: Ideas include using parks like Pinecrest Gardens for events like outdoor concerts, movies, and jazz performances to enhance community engagement. Suggestions for creating non-commercial spaces akin to quaint cafes, fostering social interaction, and promoting a sense of community without pressure to consume.

3. Communication and Civic Engagement:

Communication Channels: Residents emphasize the importance of diverse communication channels like newsletters, social media, and community postings to keep residents informed about local news and events. They suggest proactive outreach to increase awareness and participation. They emphasize the need for transparent and clear communication from authorities to improve accessibility and transparency.

Accessibility of Meetings: Discussions center around the timing and place of council meetings and public hearings, with suggestions for more accessible times and a larger and more welcoming space to accommodate working residents and increase participation.

Park Design and Usage: Criticism is voiced about park designs without public input, emphasizing the need for more resident involvement in decision-making processes, especially regarding restroom placements and event planning in parks like Leviathan Park and Pinecrest Gardens.

Civic Engagement and Governance: Residents express a strong desire for increased involvement in local decision-making processes and greater transparency and accountability in government actions. They seek improved accessibility to public services and more responsiveness from local authorities to community needs and concerns. While residents are eager to engage, many are unsure of how to do so effectively. They emphasize the importance of showcasing successful community-driven projects and collaborations between residents and government agencies as examples of effective engagement. By highlighting these initiatives, the community can inspire participation and foster a more inclusive governance process that empowers residents to make a meaningful impact.

4. Diverse Initiatives

Youth Engagement and Programs: Residents express a desire for more programs and activities targeting youth engagement, such as sports leagues, educational workshops, and cultural exchanges. These initiatives aim to provide positive outlets for young residents and promote a sense of belonging and participation in community life.

Diversity and Inclusion Programs: Residents emphasize the importance of diversity and inclusion programs that celebrate cultural diversity, promote equity, and foster unity among residents from different backgrounds. This may include cultural festivals, diversity training workshops, and community dialogues focused on inclusion and belonging.

Improving Elder Care: Residents highlighted the need for better support for elders. Suggestions include creating a program for regular check-ins to assist seniors, a matching program between teenagers and elders for volunteering and companionship, enhancing activity programs available to them, and establishing a better system for updating the Pioneers' roll.

Education and Lifelong Learning: Residents recommend the implementation of lifelong learning opportunities, adult education programs, and initiatives that promote continuous learning and personal development. Suggestions include offering classes led by volunteer residents who can share their unique skills and expertise, fostering a collaborative and enriching community environment. By encouraging residents to teach and learn from one another, the community can cultivate a culture of growth, connection, and shared knowledge.

Welcome Wagon: With more newcomers, there is a call for the Village to improve the Welcome Wagon program in collaboration with neighbors, to strengthen community ties. The program could include offers from local businesses to help integrate new residents and support the local economy.

5. Infrastructure, Transit, and Mobility

Public Transit and Mobility Solutions: Discussions focus on public transit and mobility solutions, including advocating for enhanced bus routes and expanding Freebee and bike-sharing programs. They stress the need for safer biking paths, improved access to existing routes, and traffic calming measures to ensure pedestrian and cyclist safety. While roundabouts are effective in slowing traffic, there are concerns about the addition of them. They also emphasize the importance of courteous driving behavior.

Utility Infrastructure and Technology: Concerns arise regarding utility infrastructure projects, law enforcement technology, and the effectiveness of tag reader programs for crime prevention and investigation.

Infrastructure Improvements: Residents call for better infrastructure, including underground power lines, improved road markings, and enhanced cell phone coverage to eliminate dead zones. They also support future technologies like electric vehicles.

Amenities: Residents are requesting additional amenities, including sports courts—especially pickleball courts—and dog parks. They express dissatisfaction with the rule prohibiting leashed dogs in parks and voice concerns about the existing off-leash dog parks.

6. Environment:

Environment and Sustainability: Residents raise concerns about environmental issues such as canal maintenance, littering, and the overpopulation of peacocks. They propose more effective eradication programs for invasive species and better coordination between government entities to address these environmental challenges.

Green Initiatives: Residents advocate for sustainability efforts like promoting recycling programs, community gardens, energy-efficient infrastructure, and eco-friendly practices. These initiatives aim to reduce environmental impact, conserve natural resources, and build a more sustainable and resilient community. There is also strong interest in conservation and restoration projects, including protecting local ecosystems, restoring natural habitats, and mitigating environmental degradation through tree planting campaigns, wildlife conservation, and pollution reduction. They highlight how these initiatives contribute to a healthier and more environmentally conscious community, fostering a sense of pride and happiness among residents.

7. Other

Economic Development and Business Support: Residents advocate for supporting local businesses, enhancing the aesthetics of commercial areas, and creating welcoming spaces like cafés and communal gathering spots to promote economic growth and community cohesion. They also suggest that the Village of Pinecrest administration could take a more active role in promoting local businesses within the community.

Housing Initiatives for elders: Suggestions have been made for implementing affordable housing initiatives or incentives to address housing affordability challenges faced by seniors. This includes making zoning adjustments and establishing subsidy programs to create a property tax program specifically for this population.

Historical Preservation and Heritage: Suggestions are made for preserving and celebrating Pinecrest's historical heritage, including landmarks, historical sites, and cultural traditions. This involves initiatives like historical tours, heritage preservation grants, and community projects to document and share the area's rich history with current and future generations.



Closing Remarks on Resident's Suggestions

In closing, the suggestions and insights shared by Pinecrest residents underscore a shared commitment to building a resilient and inclusive community. From enhancing safety measures and fostering community engagement to promoting environmental stewardship and cultural enrichment, the residents' voices reflect a deep sense of ownership and pride in shaping the future of Pinecrest. The emphasis on transparent communication, proactive initiatives, and collaborative decision-making signals a collective vision for a vibrant and sustainable neighborhood where every resident's voice is heard and valued.

The suggestions and recommendations provided by Pinecrest residents underscore a profound commitment to community well-being, sustainable development, and inclusive governance. The diverse array of ideas presented, ranging from infrastructure enhancements to social engagement initiatives, reflects the collective vision for a vibrant and harmonious neighborhood. Through active dialogue and engagement, residents have demonstrated a keen awareness of the challenges and opportunities facing Pinecrest, offering pragmatic solutions and innovative approaches to address them.

As Pinecrest navigates its path forward, these suggestions serve as a roadmap for prioritizing key areas of improvement, leveraging strengths, and addressing challenges with creativity and innovation. By harnessing the power of community collaboration and leveraging resident expertise, Pinecrest can continue to evolve as a model of harmonious living, where safety, well-being, and connectivity thrive, creating a truly exceptional place to call home. This report serves as a testament to the power of community-driven initiatives and the potential for positive change when stakeholders come together with a shared vision for a better tomorrow.



E Schools





Schools are addressed as a distinct topic due to their critical importance within the community. Most residents proudly highlight the quality of their schools as a key element of Pinecrest's identity, emphasizing that schools serve as the cornerstone for shaping the future of our society. Moreover, school initiatives extend beyond faculty, staff, and students; they also influence families, creating a significant societal impact. We conducted focus groups with school administrators and students, and we will present their insights in the following sections.

Perspective from School Administrators

The main concerns expressed by the school administrators centered around time constraints and inadequate mental health resources for both students and staff. Teachers struggle to participate in wellness programs due to their heavy workload and personal obligations, particularly after school. Mental health personnel, such as counselors, are overworked and unable to meet the growing needs of students, while schools are inundated with multiple programs without enough staff to manage them effectively. The inconsistency of mental health support, with coordinators not being present daily, further exacerbates the issue.

To address these challenges, the school administrators suggested providing teachers with more flexibility and resources for self-care. This includes building faculty gyms or offering free memberships to local gyms, as well as providing access to mindfulness apps. Incorporating therapy animals in schools was also noted as an effective method for reducing stress among both students and staff. Additionally, they recommended hiring more mental health personnel to alleviate the workload and improve the quality of support for students. Overall, the focus was on making wellness resources more accessible and reducing the burden on existing staff.

In summary, the primary suggestions focused on giving teachers more flexibility and resources to manage their well-being, particularly through increased access to gyms, more mental health personnel, and time for self-care during the workday.

Main Challenges

Time Constraints and Limited Participation in Wellness Programs:

Teachers face significant time constraints due to heavy workloads and personal responsibilities, making it difficult to engage in self-care or wellness activities. After-school wellness programs, in particular, see limited participation as many teachers have family commitments or other obligations, such as picking up children, that prevent them from staying after school.

Overworked Mental Health Personnel:

Counselors and mental health staff are stretched too thin to meet the growing needs of students effectively. With too many responsibilities, the support available to students is limited, leading to concerns about the adequacy of mental health services.

Insufficient Mental Health Resources:

While improvements in mental health resources have been noted since the pandemic, the inconsistency of available mental health coordinators remains a challenge. Their absence on certain days hinders the ongoing support needed by students.

Program Overload:

Schools are inundated with various programs, many of which lack the necessary personnel to manage them effectively. This overload creates difficulties in implementation, diluting the potential impact of each initiative.

Main Administrators' Suggestions

More Time for Teachers:

Teachers need dedicated time during the school day for self-care and wellness activities, rather than relying on after-school programs when many are unable to participate due to personal commitments. Offering time for mindfulness activities or well-being sessions as part of the regular school schedule was proposed to help alleviate the stress teachers face.

Faculty Gyms, Gym Access, and Community Support:

It was recommended that schools provide faculty gyms or offer free or subsidized memberships to local gyms, making it more convenient for teachers to engage in fitness activities. Partnerships with community gyms to provide these resources without financial burden were also suggested, allowing teachers to access wellness programs both on and off-campus, which would reduce stress and promote physical and mental health.

Mindfulness and Mental Health Apps:

Providing teachers with subscriptions to mindfulness and mental health apps at no additional cost was seen as an effective strategy for promoting relaxation and stress management. These apps could offer flexible and accessible solutions for teacher well-being, allowing them to practice mindfulness at their convenience.

Therapy Animals:

Introducing therapy animals into schools was suggested as a way to reduce stress for both students and staff. These animals could provide emotional support, creating a calmer and more supportive school environment.

Additional Mental Health Personnel:

Increasing the number of mental health staff in schools was recommended to better address the emotional and mental health needs of students. With more personnel, schools could offer more comprehensive counseling services and mental health education.

Perspective from Students

Students highlight the significance of social connections, personal achievements, and inner peace as key contributors to happiness, while also underscoring the pressures they face due to demanding academic schedules. Participants identified a need for change in educational policies, suggesting adjustments such as reduced homework, better exam scheduling, and more breaks to alleviate stress. In terms of community engagement, the youth expressed appreciation for Pinecrest's family-friendly atmosphere but called for more local activities and spaces to enhance social interaction. Additionally, they pointed out a lack of wellness strategies in schools, advocating for the integration of mental health practices into the curriculum. Recommendations from the report include incorporating wellbeing practices in schools, enhancing community engagement through more cultural events and social spaces, and revising educational policies to foster a more balanced and supportive environment for students.



Students - Key Findings

1. Concepts of Happiness:

Social Connections: A significant emphasis was placed on happiness deriving from time spent with loved ones and achieving a balance in life despite various stresses.

Personal Achievements and Peace: Achievements, both personal and educational, were highlighted as sources of happiness, along with a state of inner peace despite ongoing challenges.

2. Perceptions of Pinecrest:

Pinecrest is seen as an ideal place to raise a family, noted for its community involvement and friendly atmosphere. Participants described it as suburban, safe, and highly conducive to family life.

3. Educational Challenges and Stress:

High Pressure: Many students reported feeling significant pressure due to rigorous academic schedules, especially with AP exams. The need to excel in multiple domains creates a high-stress environment.

Desire for Change: Suggestions included reducing homework, better scheduling exams, implementing study periods, and providing more breaks to alleviate stress.

4. Community Engagement:

The students value community events and are actively involved in various volunteer activities. They expressed a desire for more local businesses and activities within Pinecrest to enhance community engagement.

5. Wellbeing Strategies:

Participants indicated a lack of effective stress management tools being taught at schools. There's a general consensus that schools should integrate wellness practices into the daily curriculum to improve student wellbeing.

Main Students' Suggestions

1. Implement Wellbeing Practices:

Schools should consider incorporating daily or weekly sessions focused on mental health and stress management, like meditation or relaxation exercises, into the curriculum.

2. Enhanced Community Interaction:

Pinecrest could benefit from more local and accessible venues for young people to gather, such as music venues, parks, and eateries that encourage social interaction.

3. Educational Policy Reforms:

Schools could reassess their homework policies, exam schedules, and overall academic workload to alleviate student stress and enhance the quality of student life. Introducing more frequent breaks and designated periods for relaxation, social interaction, and mindfulness activities were also recommended as effective strategies to support student well-being.

4. Increase Engagement Opportunities:

Schools and the community could collaborate to create more events and programs that foster a sense of belonging and community spirit among youth.

Main Students' Suggestions

1. Implement Wellbeing Practices: Schools should consider incorporating daily or weekly sessions focused on mental health and stress management, like meditation or relaxation exercises, into the curriculum.

2. Enhanced Community Interaction: Pinecrest could benefit from more local and accessible venues for young people to gather, such as music venues, parks, and eateries that encourage social interaction.

3. Educational Policy Reforms: Schools could reassess their homework policies, exam schedules, and overall academic workload to alleviate student stress and enhance the quality of student life. Introducing more frequent breaks and designated periods for relaxation, social interaction, and mindfulness activities were also recommended as effective strategies to support student well-being.

4. Increase Engagement Opportunities: Schools and the community could collaborate to create more events and programs that foster a sense of belonging and community spirit among youth.

Methodology

Embarking on the transformative journey of the Cities of Happiness Initiative (CHI), our methodology serves as the compass guiding our exploration. Grounded in the belief that the pursuit of collective happiness is both visionary and pragmatic, the methodology aims to understand the cultural fabric of cities and assess the diverse nuances of residents' happiness and well-being. Specifically, the methodological approach utilized in this comprehensive analysis of the Village of Pinecrest—addressing its identity, sense of happiness, challenges, and solutions—involved a structured and rigorous method designed to capture diverse perspectives and experiences.

For the quantitative component, an online survey was administered via the PlayVerto platform, known for its gamified features. PlayVerto aligned with the project's objectives by making the survey experience more interactive and enjoyable, facilitating smooth data collection. The Village of Pinecrest distributed the survey during June and July through multiple channels, including the Village magazine, social media, and email campaigns.

For qualitative data collection, from March to May, we conducted over 30 focus group sessions with key stakeholders, including residents, Village administrators, school administrators, and students. These sessions provided a wealth of qualitative data, offering deeper insights into perceptions of happiness and well-being in Pinecrest. Additionally, we collected further data at the Pinecrest Farmers Market, engaging directly with the community in an informal yet informative setting. The focus groups enabled the sharing of diverse viewpoints on a wide range of topics. The analysis of this data was conducted using narrative analysis techniques. This approach involved examining the stories and experiences shared by participants in the focus groups. By delving into these narratives, we identified recurring themes, patterns, and underlying issues that contribute to the challenges faced by Pinecrest. The narrative analysis allowed us to go beyond data points, providing a deeper understanding of the lived experiences, perceptions, and emotions of our community members. It enabled us to uncover the complexities, nuances, and interconnections between different challenges, paving the way for holistic and informed recommendations.

This methodological approach offers a comprehensive and nuanced perspective on residents' happiness and well-being and their perceptions of the Village of Pinecrest. It reflects the voices, concerns, and aspirations of residents, serving as a valuable resource for stakeholders, policymakers, and community leaders seeking to enact meaningful and positive changes.

We invite you to engage with the findings and recommendations in this report, as your insights and contributions are vital to shaping the future of the Village of Pinecrest and ensuring a thriving and resilient community for generations to come.

