

JUNE 2024

# PINECREST

THE NEWSLETTER OF YOUR VILLAGE GOVERNMENT



IN THE SPOTLIGHT  
**SUMMER CAMPS**



# A MESSAGE TO THE VILLAGE

## FROM THE MAYOR

I am pleased to present the findings of the 2024 Community Feedback Survey, conducted during January and February of this year. Your participation is invaluable in shaping the future of our community. This survey helps us understand your needs, priorities, and concerns - empowering us to serve you more effectively.

Throughout January and February, we leveraged various platforms to reach out to you, including the Village's official e-newsletter, social media channels, and the Pinecrest Tribune. Thanks to your overwhelming response, we surpassed our target, with a total of 1,012 completed surveys, providing us with robust data to work with.

The survey revealed some encouraging trends. Overwhelmingly, residents rated our police services and parks and recreation programs as "excellent" or "good," surpassing both state and national averages. Moreover, Pinecrest continues to be a place where residents feel safe and satisfied with their quality of life, with high ratings for safety, livability, and suitability for raising children.

While parks maintenance received positive ratings, there's a consensus that sidewalks and roadways require more attention.

Your feedback guides our actions. We are committed to addressing the areas of concern highlighted in the survey, prioritizing improvements to infrastructure, and continue ensuring the safety and well-being of all residents. Your input remains essential as we continue to strive for excellence in serving the Pinecrest community.

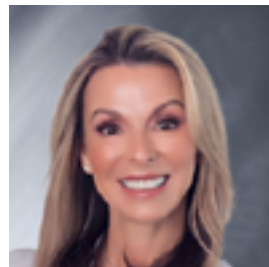
The report can be seen and downloaded at [www.pinecrest-fl.gov/surveyresults](http://www.pinecrest-fl.gov/surveyresults).

Thank you for your participation and for your dedication to making Pinecrest a wonderful place to live, work, and play.

## VILLAGE OFFICIALS



Joseph M. Corradino, Mayor  
jcorradino@pinecrest-fl.gov



Shannon del Prado, Vice Mayor  
sdelprado@pinecrest-fl.gov



Katie Abbott, Councilmember  
kabbott@pinecrest-fl.gov



Anna Hochkammer, Councilmember  
ahochkammer@pinecrest-fl.gov



Ken Fairman, Councilmember  
kfairman@pinecrest-fl.gov

# TABLE OF CONTENTS



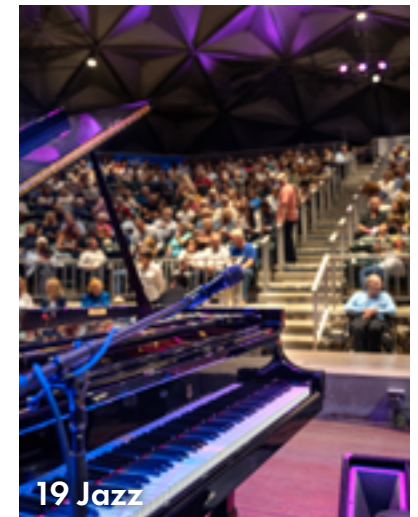
4 Reporting Illegal Tree Cutting



15 Summer Camps



5 Florida Friendly Yards



19 Jazz

## ON THE COVER

Explore the Village of Pinecrest's Summer Camps and discover something for everyone. With ten camps spanning across the Parks and Recreation Department, and Pinecrest Gardens, your little ones will be entertained all day long. Find out more on page 15.



**PINECREST**

Pinecrest Municipal Center  
12645 Pinecrest Parkway  
Pinecrest, FL 33156  
305.234.2121  
[www.pinecrest-fl.gov](http://www.pinecrest-fl.gov)



# NAVIGATING SUMMER SAFELY: CRIME PREVENTION TIPS

Pinecrest offers residents and visitors a tranquil escape from the hustle and bustle of nearby Miami. As summer approaches and the community gears up for outdoor activities and leisurely days, it's essential to prioritize safety. From neighborhood security to personal precautions, here are some tips to help you stay safe this summer.

## STRENGTHEN HOME SECURITY

Ensure doors and windows are locked, especially when you're away from home. Consider installing a home security system with cameras and motion detectors.

## BE MINDFUL OF VEHICLE SAFETY

Always lock your car doors and never leave valuables in plain sight. Park in well-lit areas, especially at night, and be cautious around unfamiliar vehicles or individuals.

## STAY VIGILANT IN PUBLIC SPACES

Pinecrest's parks and recreational areas are popular spots during the summer months. When enjoying outdoor activities, keep an eye on your belongings and avoid leaving them unattended. Stick to well-populated areas and trust your instincts if you feel uncomfortable.

## PARTICIPATE IN NEIGHBORHOOD WATCH PROGRAMS

Pinecrest is a community that values safety and camaraderie. Consider joining or starting a Neighborhood Watch Group to coordinate with neighbors to keep the area secure. To start a Neighborhood Watch Group, call **305.234.2100** or email [police@pinecrest-fl.gov](mailto:police@pinecrest-fl.gov).

## EMBRACE SMART TRAVEL PRACTICES

If traveling during the summer, take precautions to protect your home. Ask a trusted neighbor to collect your mail and newspapers, and consider installing timers on lights to give the appearance of occupancy. Avoid announcing your travel plans on social media. You can also request a free watch order for your property at [www.pinecrest-fl.gov/watchorder](http://www.pinecrest-fl.gov/watchorder).

## PRIORITIZE PERSONAL SAFETY

Whether walking, jogging, or biking around Pinecrest, prioritize personal safety. Wear reflective clothing at night, especially if you're near roadways, and carry a whistle or personal alarm device for added security. Stay situationally aware by not wearing headphones or using your phone excessively.

## REPORT SUSPICIOUS ACTIVITY

If you witness suspicious behavior, don't hesitate to call the police department at **305.234.2100**. Your vigilance and prompt action can help prevent crimes. Always call **9-1-1 for emergencies**.



# TREES IN PINECREST



## TREE PRESERVATION AND PROTECTION IN THE VILLAGE OF PINECREST

The preservation and expansion of the tree canopy and enhancement of the natural landscape within the Village remains an ongoing priority.

The preservation of trees is essential to the environmental, social, and economic well-being of Pinecrest.

In an ongoing effort to effectively implement the tree preservation and protection priority, Pinecrest has planted over 10,000 street trees since 1997. The Village has taken significant steps to protect and increase the tree canopy, including:

- The adoption and revision of ordinances that require registration of all commercial tree trimmers and landscapers in Pinecrest
- Permits for the removal of trees, replacement of removed trees
- Permits for the pruning of trees in the Village's commercial business zoning districts
- Penalties for violation of the Village's tree protection ordinances
- Awarded the Tree Growth USA in 2022 and 2023 for its continuous efforts to improve the urban forestry program and protect the tree canopy
- The Village has been named a Tree City USA community by the Arbor Day Foundation every year since its incorporation in 1996

## REPORT ILLEGAL TREE CUTTING

To request an inspection of your tree(s) or to report a suspected violation, please contact the building and planning department via email at [codecompliance@pinecrest-fl.gov](mailto:codecompliance@pinecrest-fl.gov) or call **305.234.2121** or report it via the **MyPinecrest App** under the code compliance tab.

The removal of trees not only destroys shade and animal habitat, but also negatively impacts the natural environment.

Find out more about how to remove hazardous and invasive trees, tree pruning and commercial landscaper requirements by visiting [www.pinecrest-fl.gov/trees](http://www.pinecrest-fl.gov/trees).



# CREATING A FLORIDA-FRIENDLY YARD



A Florida-Friendly Yard (FFY) conserves water, reduces waste and pollution, and supports wildlife. By following Florida-Friendly Landscaping's (FFL) nine principles, you'll not only enjoy a vibrant and sustainable garden but also contribute to the well-being of Pinecrest and beyond.

## THE NINE PRINCIPLES OF FLORIDA-FRIENDLY LANDSCAPING:

**Right Plant, Right Place:** Select plants that naturally thrive in South Florida's tropical climate to reduce the need for excess watering, fertilizers and pesticides. Native plants are already adapted to local conditions, so they're more likely to thrive with less maintenance.

**Water Efficiently:** Smart watering isn't just about when you water your yard, but also how much and what methods you use. For example, methods like properly-monitored drip irrigation delivers water directly to plant roots, reducing waste. Collecting rainwater in barrels is another great way to make the most of natural rainfall. Watering deeply but less frequently encourages plants to develop deeper root systems, making them more drought-resistant.

**Fertilize Appropriately:** Be mindful of Miami-Dade County's seasonal fertilizer ban from May 15 through October 31 to protect our waterways. Visit [www.pinecrest-fl.gov/fertilizer](http://www.pinecrest-fl.gov/fertilizer) to learn more about fertilizer use in the Village.

**Mulch:** A layer of mulch does wonders for your garden. It keeps the soil moist, adds nutrients as it breaks down and suppresses weeds. Use organic mulches like melaleuca, pine straw or eucalyptus, which improve soil structure and add beneficial organisms as they decompose.

# CREATING A FLORIDA-FRIENDLY YARD

**Attract Wildlife:** Your yard can be a sanctuary for wildlife by including a variety of plants that offer food, shelter and nesting sites. Flowering plants attract pollinators like bees and butterflies, while berry-producing shrubs provide food for birds. A birdhouse can help attract feathery friends.

**Manage Yard Pests Responsibly:** Instead of reaching for chemicals at the first sign of pests, consider eco-friendly options. Introduce beneficial insects like ladybugs to combat aphids, or use neem oil as a natural pesticide. Encourage birds that eat insects by installing birdhouses and birdbaths.

**Recycle Yard Waste:** Convert your food waste into a valuable resource for your garden by composting. Composting helps to reduce landfill waste and also enriches your soil, improving its structure and fertility. Learn more about Pinecrest's free composting program at [www.pinecrest-fl.gov/compost](http://www.pinecrest-fl.gov/compost).

**Reduce Stormwater Runoff:** Techniques like creating shallow rain gardens or shaping the earth on slopes with berms (rises) and swales (dips) can significantly reduce the amount of stormwater runoff from your property. These methods allow rainwater to soak into the ground slowly, filtering it naturally and recharging groundwater supplies.

**Protect the Waterfront:** If your property borders water, take extra care to preserve these ecosystems by maintaining a buffer zone of native plants along the water's edge, as well as establish a minimum 10-foot "low-maintenance zone," where you should avoid mowing, fertilizing, or using pesticides in that area. This buffer zone not only filters runoff but also provides habitat for aquatic wildlife, helping to keep Florida's waterways healthy.

Learn all about Florida-Friendly Yards and rebate programs at [www.pinecrest-fl.gov/FFY](http://www.pinecrest-fl.gov/FFY).

## NATIVE PLANT OF THE MONTH



A native plant is selected each month and announced at the monthly Village Council Meeting. This year the Village has highlighted the Blue Porterweed (*Stachytarpheta jamaicensis*), the Partridge Pea (*Chamaecrista fasciculata*), the Florida Tickseed (*Coreopsis floridana*), the Eastern Silver Aster (*Symphotrichum concolor*), and June's native plant of the month is the Green Thatch Palm (*Thrinax radiata*).

Planting natives aligns with the Florida-Friendly Yard program because natives are the right plant, in the right place, they require less watering, no fertilizer, and attract wildlife.



# NEWS & NOTES



## FERTILIZER BAN

As Miami-Dade County enters the rainy season, the use of fertilizers is prohibited from May 15 through October 31. Fertilizers applied during the intense rainy season have the potential to wash away into our surface waters through storm drains, canals, or direct discharges. Fertilizers contain nutrients that can be harmful to the ecosystems found in our waterways, especially Biscayne Bay. Excess nutrients pollution from our urban watershed is affecting the health of Biscayne Bay and has contributed to seagrass die-offs, algal blooms and fish kills in the Bay.

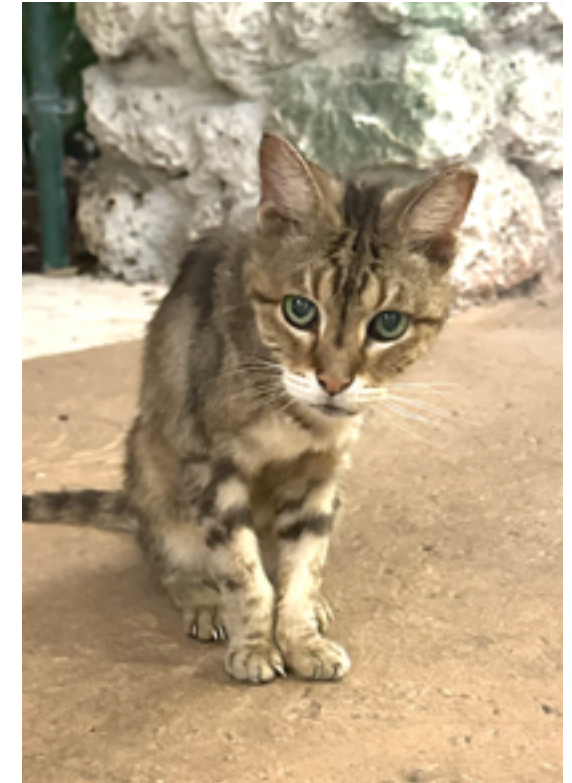
## CANALS

The changes to the quality of water in the canals are part of a maintenance initiative carried out by the South Florida Water Management District (SFWMD) aimed at improving waterflow to prevent future flooding, as well as to preserve the health and navigability of our waterways. The SFWMD is actively addressing the spread of hydrilla, an invasive aquatic plant that poses a significant threat to our waterways. Hydrilla can overwhelm canals, hindering water flow and affecting local ecosystems. For questions or concerns email [publicworks@pincrest-fl.gov](mailto:publicworks@pincrest-fl.gov).

## WATER BOTTLE FILLING STATIONS

In an effort to reduce single use plastic and to demonstrate our commitment to sustainable practices, there are water bottle filling stations in all our parks. Everyone is encouraged to bring a reusable water bottle to stay hydrated while at our parks and use the water bottle filling stations to make a positive and sustainable impact on future generations. Small habits make a big difference.

# NEWS & NOTES



## VOLUNTEERING

Volunteering is a fulfilling way to contribute to our community and make new friendships. From nurturing our green spaces to helping with local events, there's a role for everyone. These are just some of the ways to volunteer in Pincrest:

- Pincrest Gardens: Help keep our gardens lush and inviting.
- Community Events: Contribute to the success of our local celebrations.
- Sustainability Efforts: Take part in environmental initiatives that protect our future.

For detailed information, please visit [www.pincrest-fl.gov/volunteer](http://www.pincrest-fl.gov/volunteer).

## HELP STRAY CATS: TRAP, SPAY/NEUTER, VACCINATE, AND RELEASE

We need your support in caring for our community's stray cats. By taking a few simple steps, we can improve their lives and reduce their impact on our neighborhood. Here's how you can help:

- Prevent unwanted litters and help control the stray cat population. Spaying and neutering also improves the health and behavior of cats.
- Protect the health of stray cats by ensuring they receive essential vaccinations.
- Spayed/neutered and vaccinated cats are less likely to spread diseases and will not contribute to overpopulation.

The Pets Thrive in 305 Community Cat Center is located at 10700 SW 211 Street, in Cutler Bay. Call **305.418.3081** for more information or ask your local veterinarian or a cat rescue group for more resources.



# CAPITAL IMPROVEMENT PROJECTS



## ALEYDA MAS PARK

Aleyda Mas Park’s renovation efforts have started with a landscape clean-up initiative. The Parks and Recreation landscape team is working hard to bring the landscape back to a manicured state by clearing overgrown vegetation, removing debris, and clearing pathways. This initial clean-up phase is the catalyst that will set the stage for a comprehensive transformation of Aleyda Mas Park into a spectacular green space for the community. The next step in the clean-up initiative will be to prepare the main building by removing any remaining debris and getting the facility ready for the upcoming renovation.

Simultaneously, the Village has issued a Request for Qualifications (RFQ) to solicit proposals from reputable firms for the crucial next step: the master planning process and the creation of construction documents for the park’s renovation. The master planning process will begin in late spring.

# CAPITAL IMPROVEMENT PROJECTS

## SHARED-USE PATHS

As one of the adopted projects of the Village’s Transportation Master Plan approved in 2018, the Kendall Drive Shared Use Path (SUP) project will connect Ludlam Road to Red Road. The project consists of removing the existing five-foot-wide concrete sidewalk and constructing an 8-foot-wide asphalt path designed to accommodate two-way pedestrian and bicycle traffic. The path will be on the south side of Kendall Drive, with graded and sodded swales and additional street trees to beautify and add to the canopy. This project will enhance the SUP network in Pinecrest by adding connectivity to existing and future facilities. Miami-Dade County is considering a SUP along the north bank of the C-2 canal between US 1 and Ludlam Road, providing another connection point to this network. The Village will advertise for a contractor and construction is expected to begin this summer.

The Village Council authorized the design of the Ludlam Road SUP and the Florida Department of Transportation granted \$1M for its construction. This project will provide a SUP on Ludlam Road from Howard Drive to the C-2 canal. The Village will advertise to acquire engineering design services, with design expected to begin in 2024. Design and permitting are anticipated to take up to twelve months.

## CORAL PINE PARK PHASE 2

In 2014, the Village Council adopted the Coral Pine Park Master Plan and divided the construction of the approved improvements into two phases. Phase 1 was completed in 2016 with the construction of the tennis center. Phase 2 includes a new multi-purpose room, an updated restroom facility, a walking path, an exercise station, and covered walkway to the tennis and pickleball courts. This project is expected to be complete in 2025.

## PINECREST GARDENS LAKEVIEW TERRACE & RAMP RENOVATION

The investigative phase conducted by an architecture firm specializing in historical properties is complete. They are currently working on the construction plans and construction is expected to begin this summer.

## STORMWATER

The Village commissioned a Stormwater Master Plan (SMP) in 2014 and adopted the plan in 2015. An SMP adopted by the Village Council is needed to obtain funding for projects from all levels of government agencies - county, state, and federal. The SMP analyzed the Village’s drainage needs and provided a priority list of 15 basins (one being the highest priority). The Palmetto Island Drainage Project (Phase I) began in January 2023 and was completed on July 3, 2023. The Village also has the five highest priority basins under design. The Village successfully obtained funding from the United States Environmental Protection Agency and the Florida Department of Environmental Protection and continues to seek additional funding from different agencies to offset construction and construction engineering inspection costs. The projects will be constructed according to their priority in the SMP.





# CAPITAL IMPROVEMENT PROJECTS



## GARY MATZNER PARK

The final design for Gary Matzner Park, as adopted by the Village Council, includes vast open spaces, natural play areas, a covered playground, a walking path, a restroom shelter, parking, preservation of numerous specimen trees, and a park gateway that welcomes residents and guests to the northern entrance of the Village. The park landscape will include all native species and create a canopy and backdrop for families and friends to gather and be surrounded by nature as they enjoy the park's beauty and amenities. The Village has delegated Keith Associates with the task of completing construction documents based on the approved conceptual design for this facility. Once construction documents are complete, a bid will be advertised for the construction work to begin. Construction for this project should take approximately twelve months.

## POTABLE WATER LATERAL CONNECTION INSTALLATION PROJECT

This project will provide lateral connections from the potable water mains to new meter boxes for about 150 homes. The local utility, Miami-Dade Water and Sewer Department (WASD) will perform the work of tapping the main lines and installing the laterals and meter boxes. The Village will provide any needed restoration to the pavement, swale, and sidewalks. Each connection will require a permitted design and the Village has contracted with a professional engineering firm to provide those services. The final necessary studies and approvals are in progress and construction began in spring 2024. The Miami-Dade Environmental Quality Control Board (EQCB) provided a reprieve for homeowners who were provided a Notice of Required Connection (NORC) from the Department of Environmental Resources Management (DERM). These residents now have 24 months to connect to adjacent water mains after the Village completes the Lateral Connection Project.

The Public Works Department notifies affected residents once the work is completed. It provides step-by-step instructions on connecting to WASD potable water and applying for plumbing permits from the Pinecrest Building Department.

# DISCOVER AND EXPLORE SELF-LED ADVENTURES



Self-led recreation programs offer a unique and exhilarating way to explore the great outdoors while fostering personal growth and well-being. These opportunities abound in parks, allowing individuals and families to chart their own course and embark on adventures tailored to their interests and abilities. Whether embarking on a park-wide scavenger hunt, discovering hidden gems nestled within the natural landscape, throwing a ball on the field, or simply enjoying open spaces for picnics and gatherings, the benefits of engaging in your adventure are limitless.

Unlike structured activities, self-led adventures allow individuals to follow their curiosity, explore new trails, and uncover unexpected delights along the way. This autonomy promotes a sense of empowerment and self-reliance and encourages creativity and problem-solving skills as participants navigate their chosen paths through Pinecrest's diverse park system.

Self-led adventures offer invaluable opportunities for social connection and bonding with friends and family. By fostering a sense of camaraderie and shared adventure, parks become a backdrop for individual exploration and a vibrant hub for community engagement and togetherness. Make your way to one of the beautiful parks in Pinecrest to start your adventure today, the possibilities are endless, and the rewards are unlimited. Visit [www.pinecrest-fl.gov/visitparks](http://www.pinecrest-fl.gov/visitparks) to find out more information about each park.



# TAI CHI FOR ACTIVE ADULTS

Tai Chi, a gentle yet powerful form of exercise, has emerged as an exciting form of active adult wellness. There are many health benefits to Tai Chi. Its slow, deliberate movements promote balance, flexibility, and strength - which are crucial in preventing falls and maintaining mobility. Tai Chi is proven to reduce stress, alleviate joint pain, and even increase cognitive function, making it an ideal practice for anyone looking to enhance their overall well-being.

Beyond its physical advantages, Tai Chi fosters community and social connectedness among participants. In a society where loneliness and isolation among seniors are significant concerns, these classes provide a valuable opportunity for seniors to unite, forge friendships, and support one another on their wellness journeys. The camaraderie built through shared experiences in Tai Chi can contribute to improved mental health and a greater sense of belonging, factors essential for maintaining a high quality of life.

What truly sets Tai Chi apart for seniors is the sheer enjoyment and sense of fulfillment it brings. Far from being just another exercise routine, Tai Chi is a graceful and meditative practice that allows individuals to connect with their bodies and surroundings. As participants flow through the gentle movements, they often find themselves immersed in the present moment, experiencing a sense of peace and tranquility that is both invigorating and rejuvenating. With the guidance of volunteers Bill Randall and Michele Rivers, these classes have become not just a means to better health but also a source of joy and vitality for all who attend. Join us for free Tai Chi classes every Tuesday and Wednesday at 11:30 am at the Pinecrest Community Center.



# SUMMERTIME FITNESS



Staying committed to fitness goals during the summer can be challenging, but with the right strategies, it's entirely achievable.

First, prioritize your workouts by scheduling them in advance. Make time for exercise in your calendar and treat it like an appointment you cannot miss. Consistency is key.

Second, focus on efficiency by choosing high-intensity workouts that deliver maximum results in minimal time. High-Intensity Interval Training (HIIT) sessions, circuit training, or quick bodyweight workouts are all effective options when time is limited. You can also incorporate compound exercises into your workout routine that target multiple muscle groups simultaneously.

Third, stay flexible with your exercise routine. It's essential to consider alternate workouts such as walking, hiking, biking, or swimming when you cannot make it to the gym. Travel with a set of resistance bands or a jump rope for quick workouts wherever you are. You can maintain your momentum and continue making progress toward your fitness goals with some imagination.

The Pinecrest Parks and Recreation Department is here to help make summer fitness fun and easy to do. Whether you are a student home on break or you are looking for a great place to stay in shape, the Pinecrest Community Center Gym will help you keep up with your fitness goals. Group fitness classes, state-of-the-art equipment, certified personal trainers, and professional fitness instructors are ready and able to help you stay committed to your fitness goals. Visit [www.pinecrest-fl.gov/fitness](http://www.pinecrest-fl.gov/fitness) for more information on everything **#FitCrest**.



# SUMMER CAMPS

With eight diverse options, there is something for every camper this summer at Pinecrest Parks and Recreation. Your camper will have fun with new friends and experiences by participating in one or all of the camps this summer.

Try tennis for the first time, or improve your game with **David Ensignia Tennis Camp**. Experience high-energy fun, athleticism, and artistic expression with **Pinecrest Dance Project's Dance & Crafts Camp**. **Super Soccer Stars Camp** offers convenient, fun soccer camps. **Miami Stone Crabs Lacrosse Camp** is South Florida's top camp for learning and playing lacrosse.

**STARS Camp** is an inclusive and enriching experience designed for diverse youth, including children with special needs. If technology is your camper's passion, they can learn to code and build video games using Minecraft and Roblox in **Teknik Coding Camp**. Science, technology, engineering, art, and math are center stage in the wild-life-themed **Snapology Camp**.

To round off camp programming, **Funcamps** offers the award-winning MagiCamp or a three-in-one camp featuring Amazing Science, Space, and JurassiCamp.

These unique camps aim to create a supportive and welcoming environment where all participants can thrive. Learn more and secure your spot today by visiting [www.pinecrest-fl.gov/camps](http://www.pinecrest-fl.gov/camps).



# SUMMER CAMPS



Pinecrest Gardens is the place to be during the summer. To get the most out of your child's summer experience, consider enrolling in one of our summer camps.

Join our STEAM Camp with **Discovery Lab** for children ages 4 to 9 or enroll your toddler ages 2 to 4 in a half-day toddler camp with **Pinecrest Dance Project**.

Campers will learn the five areas of STEAM (Science, Technology, Engineering, Arts, and Math) in the STEAM Summer Camp by Discovery Lab. Popular themes include chemistry, energy, mechanical engineering, and life science. Each day brings new activities and opportunities to explore the exciting world of science.

Toddlers enjoy a fun and safe experience in a half-day camp led by the Pinecrest Dance Project. Days are filled with activities such as art, gymnastics, and music. From 9 am to noon, campers will have fun, explore, and enjoy all that the Gardens has to offer.

All campers have access to Gardens amenities including visits to the mini zoo, splash 'n play, and playground. For more information on our upcoming summer camps, please visit [www.pinecrestgardens.org/camps](http://www.pinecrestgardens.org/camps).



# PINECREST GARDENS BALDCYPRESS

The Baldcypress, *Taxodium distichum*, evocative symbol of southern lakes, rivers, and swamps, is an ancient member of the Cypress family, related to true Cypress, Juniper, and Redwood. The species naturally occurs as far north as Southern Illinois and west to South-Central Texas. Baldcypresses, when not topped by storms or lightning, are the tallest trees found east of the Rocky Mountains, living for many hundreds of years and potentially growing to more than 140 feet.

We might think of old growth tree species in the U.S. occurring mostly in the Pacific Northwest or California, but old growth Baldcypress can be found in the Big Cypress National Preserve and the Everglades. Venerable trees also grow in the Audubon Society's Corkscrew Swamp Sanctuary, east of Naples. An impressive grove of large trees that aren't publicly accessible is protected by the Seminole Tribe on its Big Cypress Reservation.

Locally, small groups and individually planted Baldcypress can be found in Pinecrest, mostly along canal banks. The most significant and unique population of surviving old growth trees is the remnant along the preserved portion of the historical Snapper Creek slough in Pinecrest Gardens and just across 57 Avenue. These priceless trees, growing just inland from coastal mangroves, have survived countless years of storms and the threat of urban development. Tequesta peoples likely camped and fished beneath them. Perhaps they were mature when the first Spanish explorers made landfall.

Baldcypress populations are considered relatively stable at present, even as overall southern forest loss has accelerated. Coastal populations, in particular, are threatened by rising sea levels and increasing salinity in the wet places where they grow.



## TIPS FOR SUMMER VISITS



Over the summer, Pinecrest Gardens is a destination for visiting camp groups, field trips, and two in-house summer camps. If you are planning to visit the Gardens this summer, here are a few tips to ensure that your experience is fun, safe, and memorable.

Tip #1: Consider visiting in the afternoons for a more serene experience. With an influx of camp groups and field trips, the Gardens tends to be busier in the mornings.

Tip #2: Pack a bathing suit. Don't forget to bring a bathing suit, towel, sunscreen, and a change of clothes for your little explorers. Visiting the splash n' play is a great way to cool down after visiting the playground.

Tip #3: Call us at **305.669.6990** or visit **[www.pinecrestgardens.org](http://www.pinecrestgardens.org)** before you arrive. With heavy foot traffic and summer storms, there may be times when areas are undergoing maintenance or may be temporarily closed for safety. It's always a good idea to call before you arrive for the latest updates.

Tip #4: Explore the long way. The summer is a great time to explore the Lower Gardens. With dense shade and lower elevation, the Lower Gardens has a cool, calming effect. Don't forget to stop and appreciate the aquatic wildlife while you're there.



# JAZZ AT PINECREST GARDENS



## ANNOUNCING THE 2024/2025 JAZZ AT PINECREST GARDENS SEASON LINEUP

Pinecrest Gardens redefines the South Florida concert series landscape with the unveiling of its 2024-25 lineup, featuring a robust season of jazz. The live jazz series, known as **Jazz at Pinecrest Gardens** includes a high-quality and diverse mix of genres ranging from piano and vocal duet to big band talent.

Live at the Banyan Bowl, each performance benefits from the amphitheater's unparalleled natural acoustics, enhancing the vibrancy of the music. Full-season subscriptions are now on sale and available at [www.pinecrestgardens.org/jazz](http://www.pinecrestgardens.org/jazz). Single-show tickets will go on sale in early fall 2024.

**November 2: The Hot Sardines** - Hot Sardines, a beloved Brooklyn-based group, revives the hot jazz sounds of the 1930s and 40s. They masterfully blend brass, piano, and percussion to recreate vintage jazz. With their vintage twist and authentic sound, Hot Sardines are beloved by audiences worldwide.

**December 7: Jukebox Saturday Night** - Step back in time with **Jukebox Saturday Night**, a lively homage to the iconic Big Bands of the 1930s, 40s, and 50s, including Duke Ellington, Cab Calloway, Jimmy Lunceford, Artie Shaw, and Tommy Dorsey. This show will captivate all ages with the era's iconic melodies and lyrics, performed by dynamic instrumentalists and vocalists.

**January 18: Big Chief Donald Harrison** - Renowned New Orleans-based saxophonist and National Endowment of the Arts (NEA) Jazz Master **Big Chief Donald Harrison** blends jazz, soul, and funk. Notable collaborations include Roy Haynes and Miles Davis, and Notorious BIG shaping his diverse musical influences. He pioneered three influential jazz styles, including Nouveau Swing, blending modern jazz with hip-hop and funk.

# JAZZ AT PINECREST GARDENS



**February 8: Kandace Springs Trio** - Kandace Springs blends jazz, gospel, rhythm & blues, and pop with "a voice that could melt snow." On Springs' latest Blue Note Records album **The Women Who Raised Me**, she pays tribute to iconic female vocalists like Ella Fitzgerald, Billie Holiday, Astrud Gilberto, Sade, and Norah Jones, infusing each rendition with her unique style and expression.

**March 15: John Lloyd Young** - John Lloyd Young is an award-winning artist known for his multifaceted career spanning film and stage, particularly as the original **Franki Valli** in Jersey Boys. Young was hand-picked by director Clint Eastwood to reprise his role in the film adaptation. Young performs vocals, accompanied by a pianist.

**April 11: Gordon Goodwin's Big Phat Band** - A Grammy-winning powerhouse renowned for its infectious energy, this virtuosic group fuses movie scores, big band jazz, and contemporary arrangements, captivating audiences worldwide. Comprising eighteen of Los Angeles' finest musicians, the Gordon Goodwin Big Phat Band takes the big band tradition into the new millennium with a contemporary, highly-original sound.

[WWW.PINECRESTGARDENS.ORG/JAZZ](http://WWW.PINECRESTGARDENS.ORG/JAZZ)

### THANK YOU TO OUR 2023/2024 JAZZ SEASON SPONSORS

Steinway & Sons, Miami-Dade County Cultural Affairs, Florida Department of State, Division of Arts and Culture, Panter Panter & Sampedro, PA, National Endowment of the Arts (NEA), Village of Pinecrest, WLRN and WDNA

### Sponsorship Opportunities Available for the 2024/2025 Jazz at Pinecrest season

To become a sponsor or request partnership details, contact Cristina Blanco at [cblanco@pinecrestgardens.org](mailto:cblanco@pinecrestgardens.org).



# VENUE RENTALS



## PINECREST GARDENS, A LUSH AND SERENE LOCATION FOR YOUR NEXT EVENT

Celebrate life's unforgettable moments in the heart of nature at Pinecrest Gardens. Our lush botanical haven offers versatile venue spaces for intimate weddings, adult and kids' birthdays, networking events, corporate gatherings, team building sessions, and holiday parties. Discover enchanting indoor and outdoor settings amidst the historic Gardens, surrounded by vibrant trees, plants, and breathtaking vistas. Whether you're envisioning an elegant affair or a casual gathering, our picturesque locales provide the perfect backdrop for your special occasions.

Create lasting memories in the intimate and stunning environment of Pinecrest Gardens.

Intimate Indoors and Stunning Outdoor Venues

# PINECREST GARDENS







**PINECREST**

**Village of Pinecrest**

12645 Pinecrest Parkway

Pinecrest, FL 33156

PRESORTED  
STANDARD  
U.S. POSTAGE  
**PAID**  
Permit #2121  
Miami, FL

# HAPPY PINECREST PEOPLE INITIATIVE

## Your Happiness Matters:

Help us shape a happier Pinecrest by scanning the QR Code and taking a fun and interactive survey. By participating, you are helping create a baseline for quality of life in Pinecrest. We plan to reassess the community periodically to see if the programs and activities we are implementing are increasing overall well-being. Together, let's create a thriving, happy Pinecrest for everyone.

